

APPROCHE AUX INSTRUMENTS

ROANNE RENAISSON

Instrument approach

CAT A B C

RNAV (GNSS) RWY 20

ALT AD : 1106, THR : 1068 (39 hPa)

APP : SAINT YAN Approche/Approach 123.4 - 119.5 (S) (1)

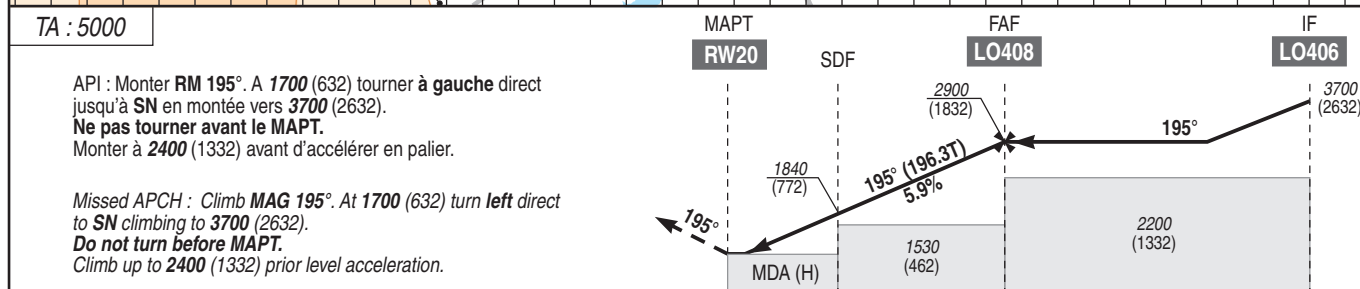
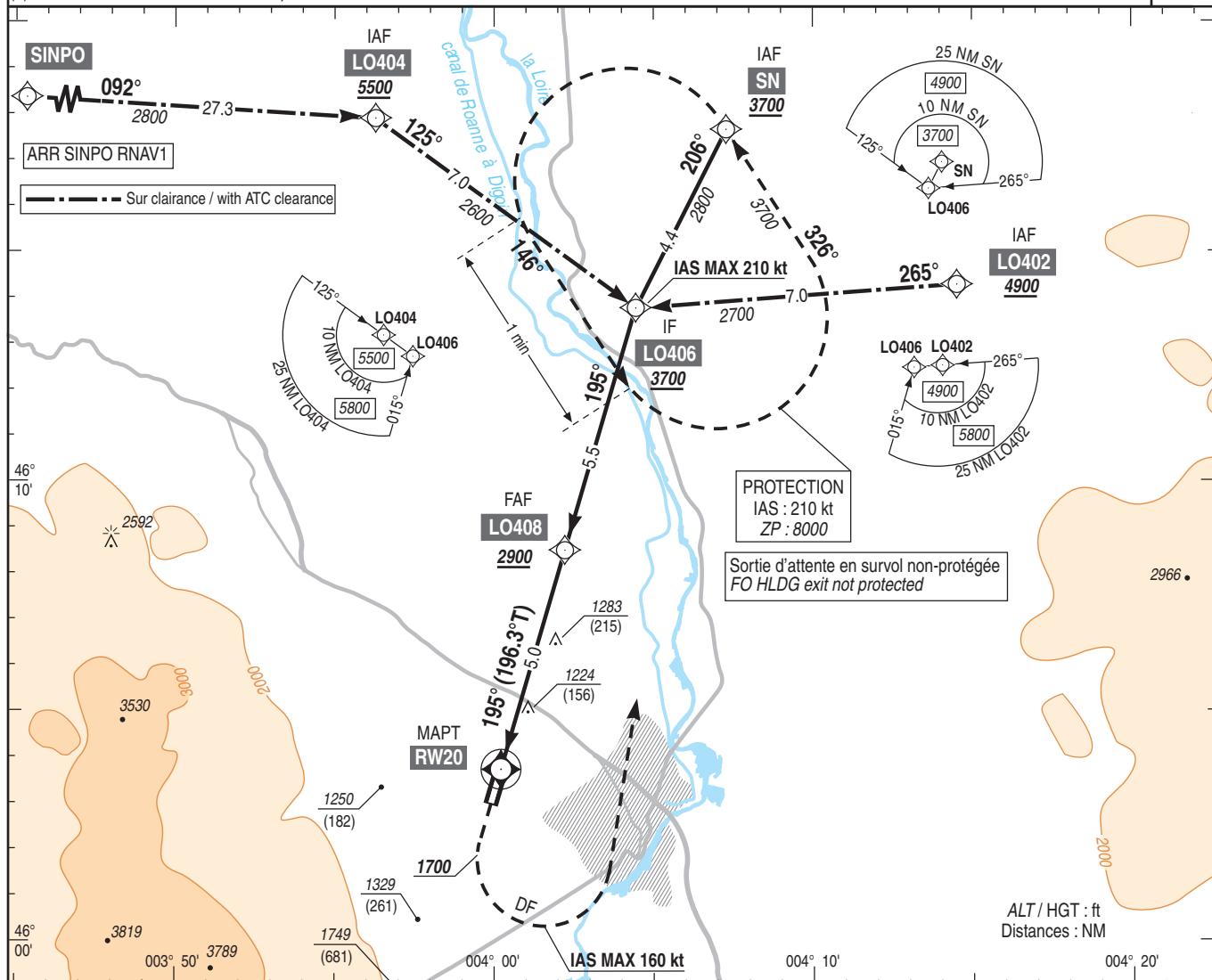
CLERMONT Approche/Approach 120.675 (2)

AFIS : ROANNE Information 120.9 (3)

(1) Dans les limites de la TMA SAINT YAN. / Within the limits of TMA SAINT YAN. (2) Lorsque SAINT YAN est fermé. / When SAINT YAN is closed.

(3) Absence AFIS : Procédure interdite/prohibited.

VAR
1°E
(15)



THR ← (NM) 0 2.0 5.0 10.5
MNM AD : distances verticales en pieds, RVR et VIS en mètres. / Vertical distances in feet, RVR and VIS in meters. REF HGT : ALT THR

CAT	LNAV OCH : 402		MVL/Circling (1) (2)		DIST RWY20
	MDA (H)	RVR	MDA (H)	VIS	
A	1470 (410)	1500	1550 (490)	1500	NM 2 3 4 5 ALT 1840 2190 2550 2900 (HGT) (772) (1122) (1482) (1832)
B		1500	1630 (570)	1600	
C		1900	2150 (1090)	2400	

Observations /Remarks : (1) HJ seulement/only (2) MVL interdite à l'Ouest de la piste pour les aéronefs de CAT B et C / Circling prohibited W of RWY for CAT B and C aircraft.

	FAF - MAPT	5.0 NM	70 kt	85 kt	100 kt	115 kt	130 kt	145 kt	160 kt
			4 min 17	3 min 32	3 min 00	2 min 37	2 min 18	2 min 04	1 min 52
VSP (ft/min)			420	510	595	685	775	865	955